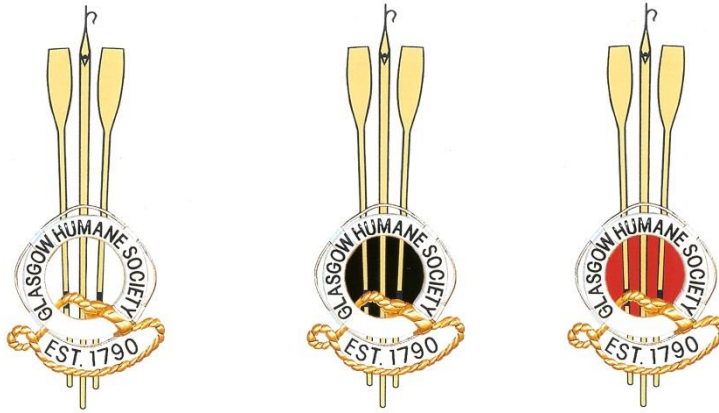


# **Glasgow Humane Society**



## **List of Bridges crossing the River Clyde in the City of Glasgow for instant Identification purposes**

**Includes GPS readings for bridges.**

**List of local names for bridges and roads on either side.**

**List of pontoons.**

**Boom gate positions for emergency riverbank access.**

**Establishments where extra water safety equipment is stored and in some cases personnel trained in use of.**

## **Carmyle Bridge**

(Lit up during 2015)

265557 661528



Note-above is disused rail bridge that they hope to make into a footbridge-at present no crossing

## **Carmyle Dam**

### **Auld Boat Hoose (Public House) beside Carmyle Dam**

Lifelbelts + throw ropes inside-during opening hours—staff trained in water safety



265137 661587

## **Clydeford Bridge**



A763-Traffic and pedestrian Bridge

264498 661303

No lifebelts

## **Cambuslang Bridges**



Cambuslang Road/Bridge Street

Footbridge

263605 661838

No lifebelts

Beside old Bridge

264069 661034

## **Cambuslang Rd Bridge**



Boggleshole Road

263619 661873

No lifebelts

Railway Bridge (in use) foot walk along/under bridge—supposedly only for rail inspection—but have seen pedestrians using it)

263617 661873

**M73 Motorway Bridge**

Auchenshuggle

263561 662436

Lifebelts below Bridge on walkway



From the Auchenchuggle Bridge on the north bank there are lifebelt positions downstream wherever possible to R Kelvin at the Transport Museum

Boom gates on lanes that run from London Rd to towpath at either end of Kier Homes site (old Belvidere Hospital)



## **Cunningar Bridge**

Lifebelt in centre of bridge

## **Dalmarnock Road Bridge**

261717 662661

Lifebelts on bridge

Boom gate entry to towpath upstream on north bank—Council 121 or 113 lock



## Dalmarnock Railway Bridge

261358 662510



Shore Street Boom Gate access to riverbank  
towpath



Cotton Street Boom Gate access to riverbank  
towpath

**Smart Bridge** Carstairs Street Lifebelts on bridge  
and at each end



**Rutherglen Bridge** Main Street/Shawfield Drive  
260613 663101 Lifebelts on bridge

Note Lifebelts hang on the Model Boat Club  
building at the side of Richmond Park Pond



**Polmadie Footbridge** (Officially the Kay Bridge but the name does not get used) Polmadie Road/Richmond Park/ Football pitches 260126 663290 Lifebelts on bridge



Being demolished during 2016

Glasgow Rowing Club south bank at Rutherglen Rd.—extra Lifebelts and ropes available only when club is open-training has been given



**Kings Bridge** Kings Drive/Ballater Street 260008  
663771 Lifebelts on bridge



East Boathouse- extra Lifebelts and ropes  
available only when clubs are open—training has  
been given



**St Andrews Suspension Bridge McNeill  
Street/Swing Bridge/Green Bridge/Blue Bridge  
259961 664003 Lifebelts on bridge**



**Glasgow Humane Society Wharfage and House-  
north bank- extra Lifebelts and ropes available  
24/7 if no one is at the Boathouse or House,  
equipment is in the front garden—officers and  
lifeguards trained 0141 429 2492**



West boathouse-north bank- extra Lifebelts and ropes available only when club is open-training has been given

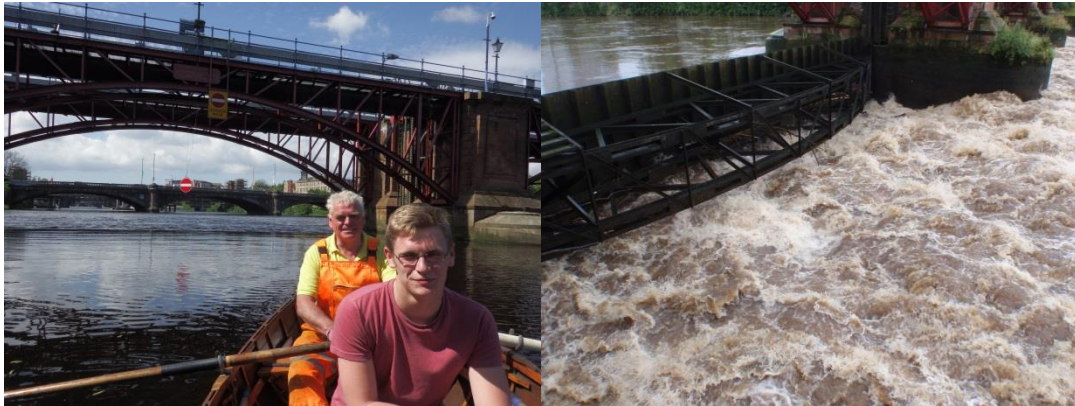


Note-in Glasgow Parks many Park Wardens have been trained in the use of throw ropes and lifebelts



**Tidal Weir and Pipe Bridge (No public access)**

259514 664378 Lifebelts and throw ropes  
available 24/7 staff trained 0141 276 1585



**16 Albert Bridge Crown Street/Saltmarket/ High Court 259402 664423 Lifebelts on bridge**



Nautical College south side- extra Lifebelts and  
ropes available only when College is open



Union Railway Bridge 259283 664510



**Victoria Bridge** Stockwell Street/Gorbals  
Street/Sheriff Court 259162 664550 Lifebelts on  
bridge



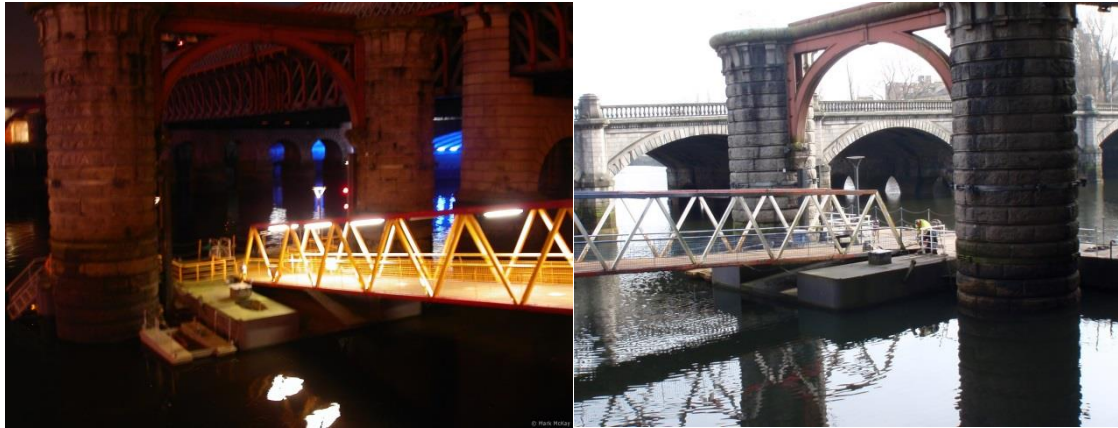
**Lower Suspension Bridge**-no official name—  
South Portland Street Bridge/ Carlton  
Place/Custom House Quay/Dixon Street/Clyde  
Street Lifebelts on bridge



**Glasgow Bridge** Jamaica Street/Bridge Street  
258777 664827 Lifebelts on bridge



Waterbus Pontoon no 20 Gangway and steps 113  
or 121 key required 258720 664856



Caledonian (Central) Railway Bridges—no public access although persons do climb up onto the girders and sleep inside it. 258690 664854



**George 5<sup>th</sup> Bridge** Ostwald Street/Commerce Street A77 25869 664854 Lifebelts on bridge



Casino- north bank-extra Lifebelts and ropes  
available only when Casino is open-staff trained  
Broomielaw Pontoon north Bank—access code by  
contacting Weir 0141 276 1585



**Tradeston Bridge** Squiggly Bridge/Clyde  
Place/Broomielaw/West Street 258287 664851  
Lifebelts on bridge



Ferry Nightclub-north bank- extra Lifebelts and ropes available only when club is open-staff trained



Kingston Bridge 257995 664917



**Clyde Arc Squinty Bridge/Finnieston  
Street/A814/from Govan Road 257269 665064  
Lifelbelts on bridge**



STV south bank extra Lifebelts and ropes  
available 24/7 –staff trained

Hotel north bank- extra Lifebelts and ropes  
available

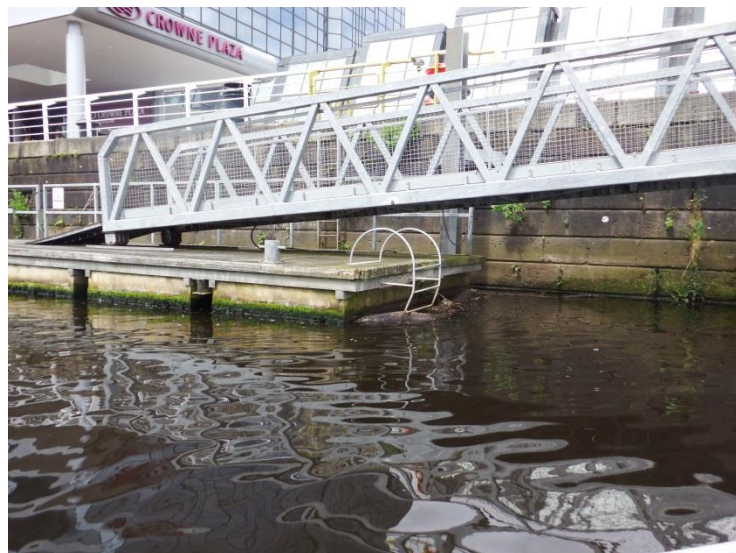
Plantation Pacific Quay pontoon



**Bells Bridge** Exhibition Centre/Hydro/Science Centre/BBC 256824 665220 Lifebelts on bridge



Crowne Plaza pontoon and Hotel—north bank--  
access to pontoon (key from Reception) Extra  
lifebelts and ropes carried inside Hotel, staff  
trained in use



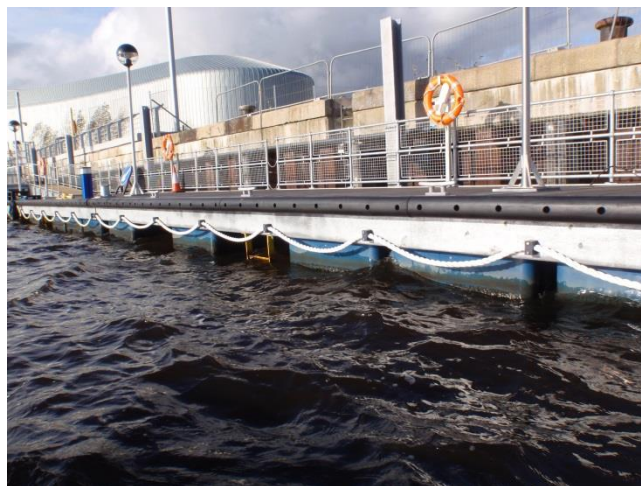
**Millennium Bridge** Science Centre/Crowne Plaza  
256622 665278 Lifebelts on bridge



Science Centre –south bank- extra Lifebelts and ropes available only when centre is open-staff trained

Note-there is a pontoon in Princes Dock behind the Science Centre

Yorkhill Transport Museum Pontoon



Note that it is very difficult to bring anyone out of the water up this yellow ladder—this is being looked at Jan 2015

Govan Pontoon



Kelvin Pontoon



Yoker/Renfrew Ferry Slipway

Erskine Bridge 246210 672436

